

Figure 5. Carlin West and AJ zones showing the nature of the zones as defined by soil samples. Note the 60 by 120m where all soils run $\geq 30g Ag/t$ ($\geq 10z Ag/t$) and the high-grade grabs associated with both zones.



Figure 3. Anderson Gold Trend showing four areas where over 17,000m of linear gold in soil anomalies have been outlined, includes main and sub zones. Other areas that show strong indication of iodide gold are also outlined.

Table One. Summary of lengths and gold values for zones and subzones from the sampled prospects in the eastern.

Prospect	Main Zone		Subzones		
	Length	Max gold value	#	Length	Max gold value
Owl-Anderson	>3,000m	527ppb	32	2,060m	86ppb
Peak	>1,600m	272ppb	5	1,930m	36ppb
Steep Creek	>1,700m	142ppb	7	2m450m	87ppb
Norman ¹	>1,200m	87ppb			

1. Two zones have been combined

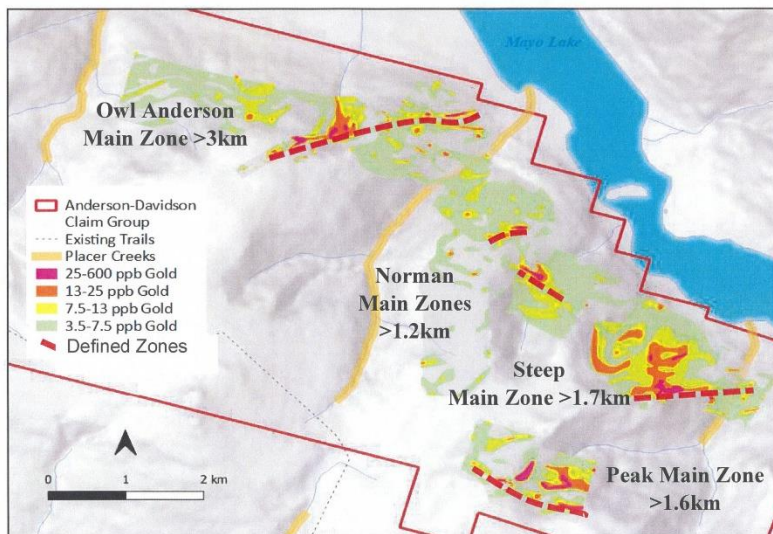


Figure 4. Four main areas in eastern part of Anderson Gold Trend with strong indications of gold as shown in Table One, including the main zones at each.

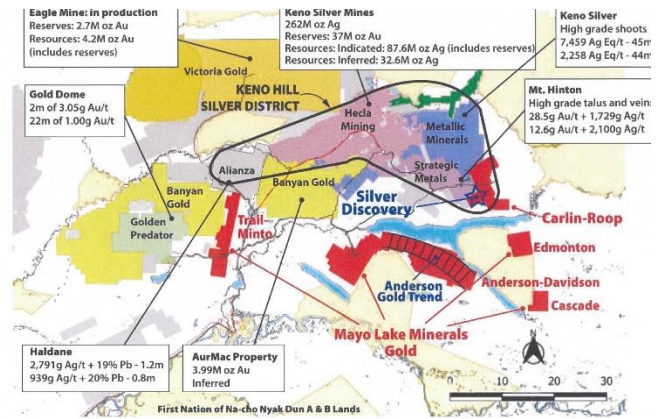


Figure 1. Properties near Mayo Lake in the Tombstone Gold Belt. Note the location of Mayo Lake Minerals' five properties, the Keno Hill Silver District and the Carlin West Silver Discovery and the Anderson Gold Trend.

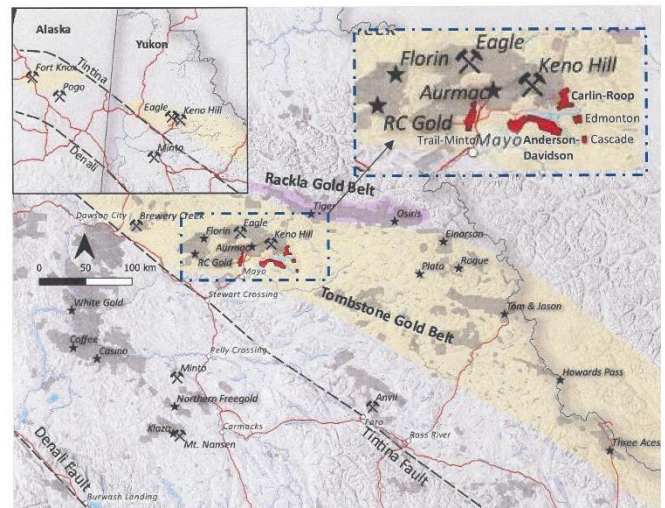


Figure 2. Gold mines, resources and active projects in the Yukon's Tombstone Gold Belt

Table Two. Gold Mines and Deposits in Tombstone Gold Belt

- **Brewery Creek** (Sabre Gold). Intrusion-related, historical production of 280,000 oz Au/t + plus 750,000 oz Au IND; 440,000 oz Au INF.
- **RC Gold** (Silta Gold). Intrusion-related; 1,340,000 oz Au INF at 0.86g Au/t
- **Florin** (Florin AG). 2,474,000 oz Au INF at 0.5g Au/t
- **AurMac** (Banyan Gold). Skarn and veins; 3,999,000 oz Au INF at 0.6g Au/t
- **Eagle** (Victoria Gold). Producing mine; intrusion related 5,360,000 oz Au MES and IND at pre-production
- **Rogue** (Snowline Gold). Intrusion-related, intense sheeted mining; intercepts 410m at 1.9g Au/t; 318m of 2.6g Au/t
- **Raven** (Victoria Gold). 1,100,000 oz Au INF at 12g Au/t
- **Einarson** (Snowline Gold). Epizonal orogenic; grabs to 34g Au/t; intercepts, 1.5m at 45g Au/t
- **Three Aces** (Seabridge Gold). Orogenic; 18m at 16.8g Au/t, 9m at 9.4g Au/t
- **Golden Culvert** (Stratabound). Assays up to 320g Au/t along 130 by 170 belt

MEA – measured; IND – indicated; INF - inferred